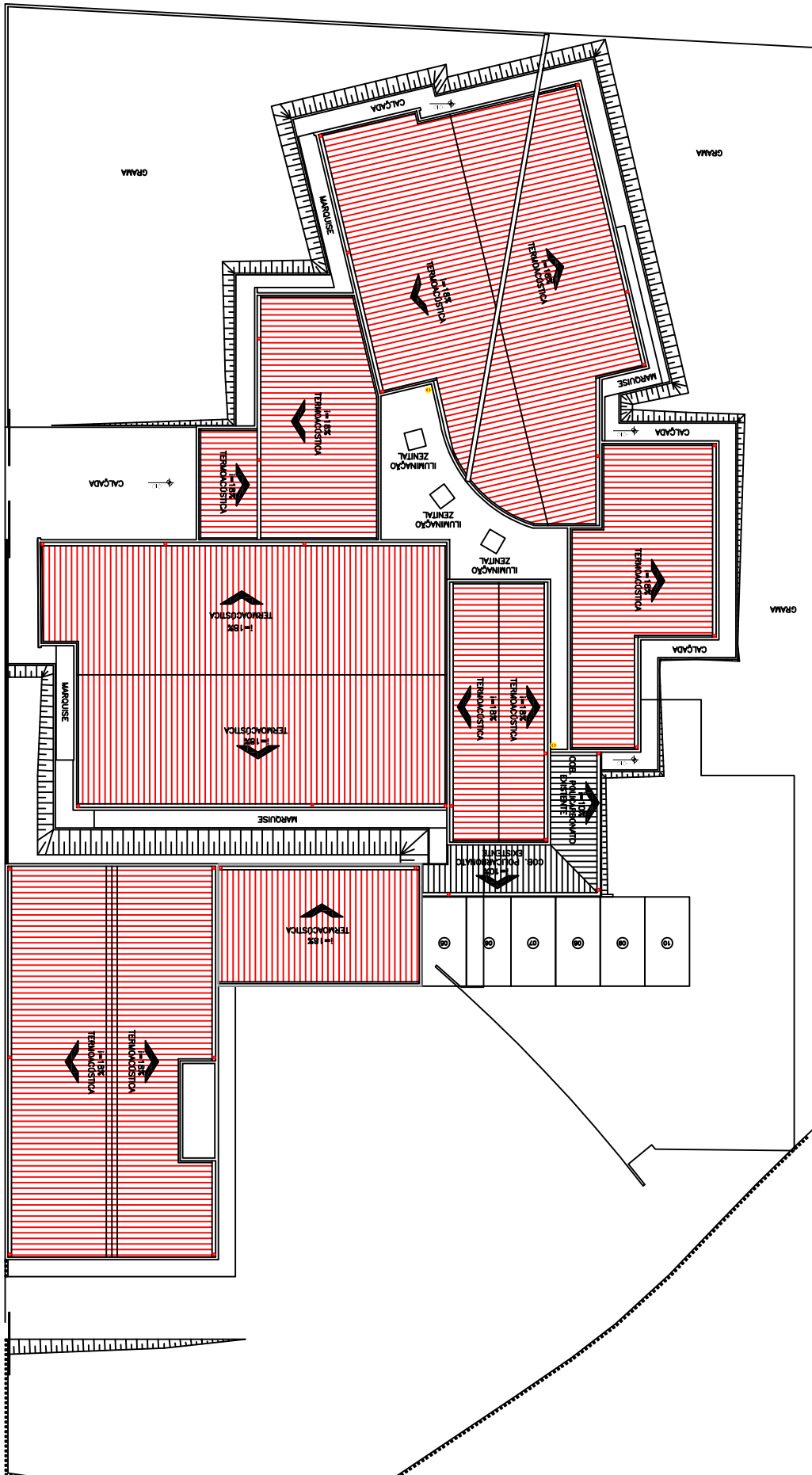
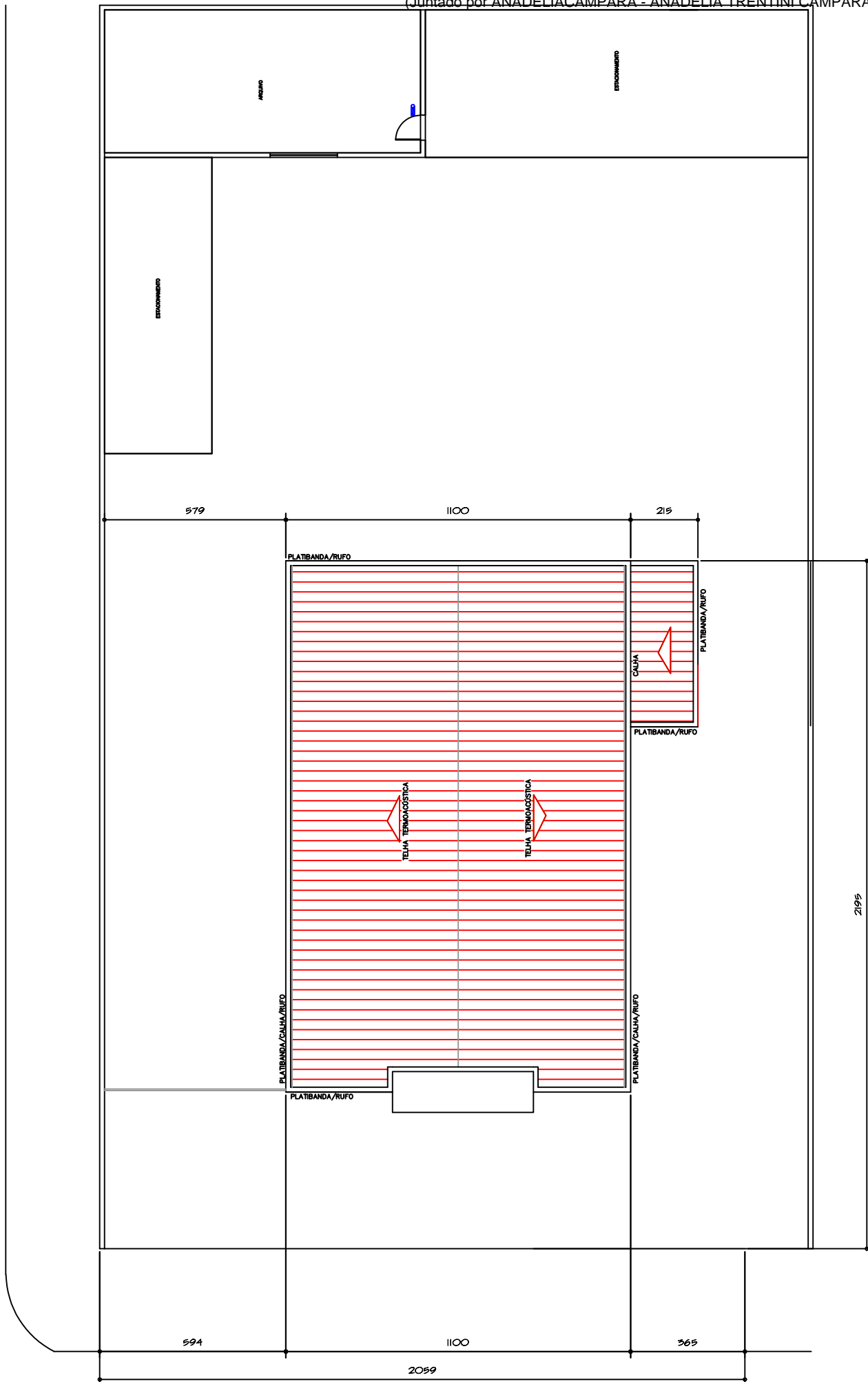


FÓRUM TRABALHISTA DE ARAUCÁRIA
IMPLANTAÇÃO E COBERTURA
PRÉDIO PRINCIPAL + ANEXO – 1.247,31 m²



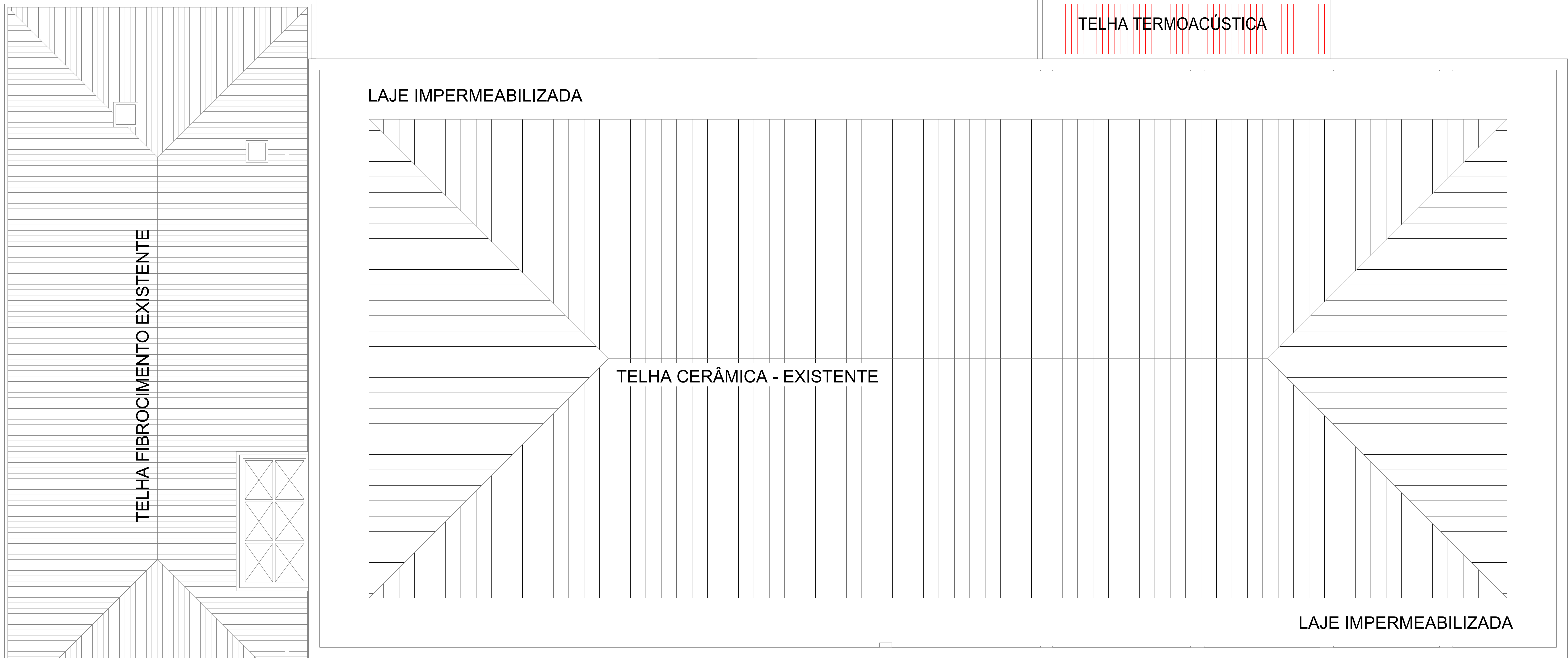
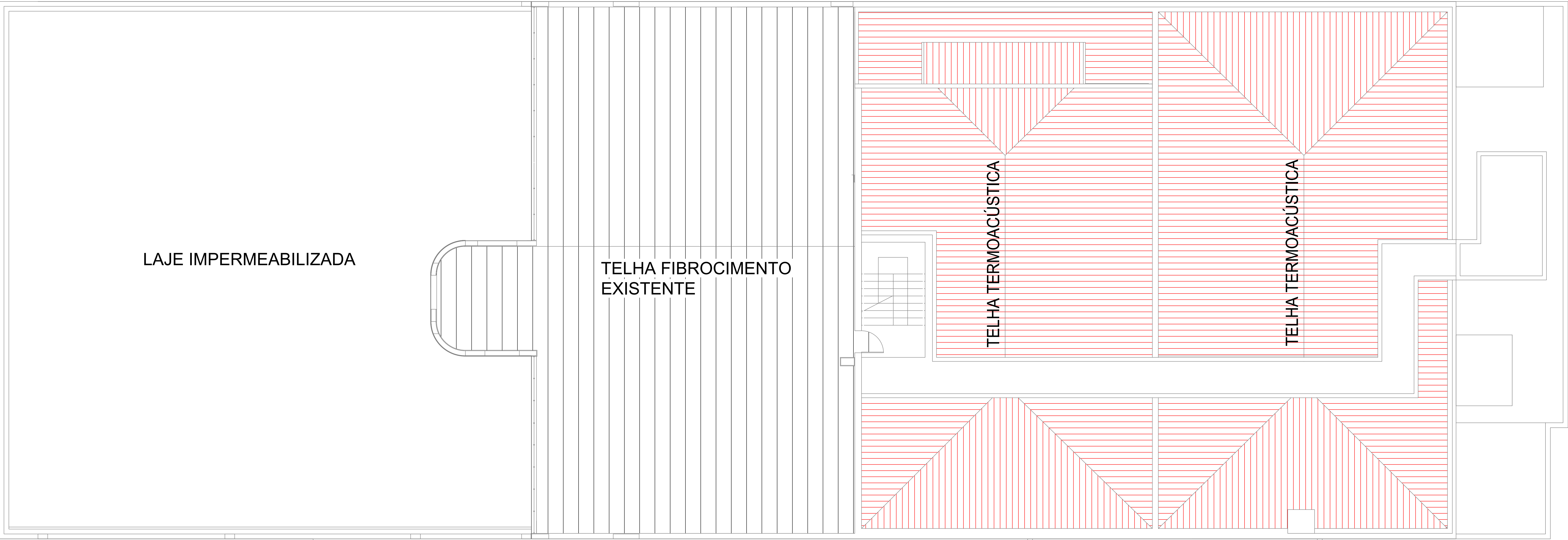


VARA DE IRATI

PROAD 2165/2025. DOC 17. Para verificar a autenticidade desta cópia,
acesse o seguinte endereço eletrônico e informe o código 2025.YWZJ.KFXP:
<https://www.trt9.jus.br/proad/proad/consultadocumento.xhtml>

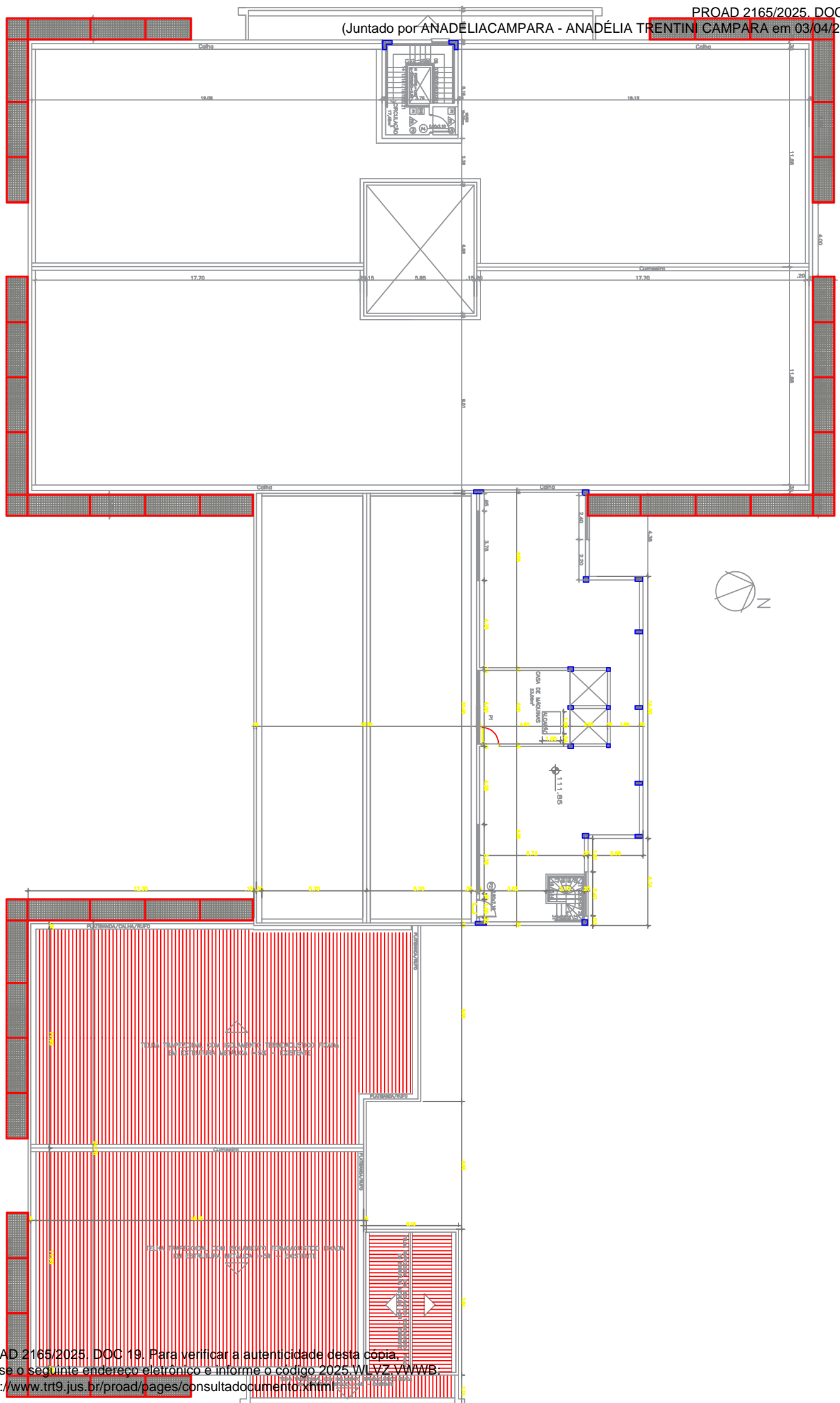
IMPLANTACAO DE COBERTURA
PREDIO PRINCIPAL 197,85 m²





FÓRUM CURITIBA
MÓDULO ANEXO - 540,73 m²





FÓRUM PONTA GROSSA
IMPLANTAÇÃO E COBERTURA
MÓDULO 3 – 468,51 m²

